

Agenda

- Syllabus
- What is software testing ?
- Why it's needed ?
- What is going to happened, if we have lack of testing in our software ?

Instructor & GTA

- Instructor :
 - Ali Sharifara
 - Email : ali.sharifara@uta.edu
 - Office Location : ERB 321, CSE@UTA
 - Office hours: Mo & We 4:00p.m. – 5:30p.m. or by appointment

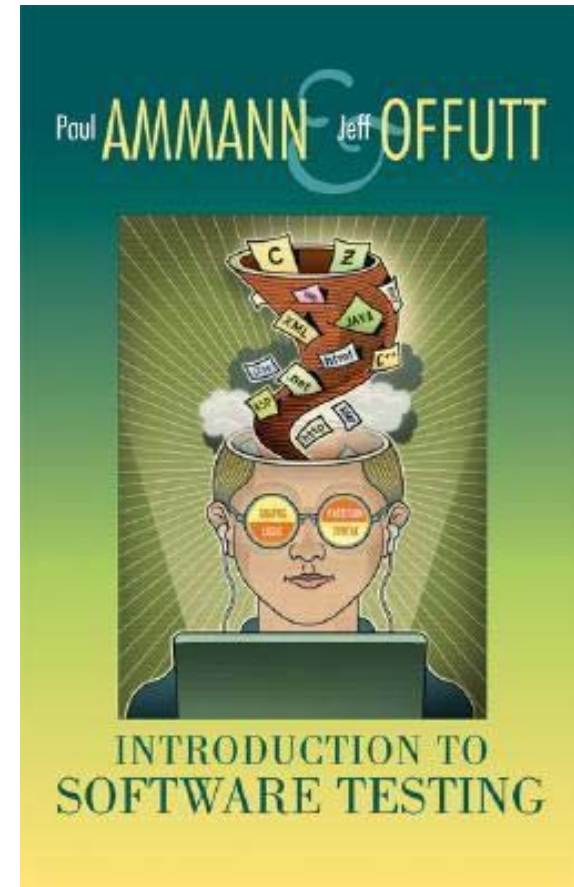
- GTA :
 - Name: Saurabh Devendra Botre
 - Email: saurabhdevendra.botre@mavs.uta.edu
 - Office location : ERB 501, CSE@UTA
 - Office hours : Tu & Th 12pm to 1.30pm or by appointment

Blackboard

-
- All the course materials will be posted on Blackboard and my website.
 - Announcements, lecture notes, assignments, and other materials
 - Submissions and grades will also be managed using Blackboard. Also, a forum will be set up for discussion.
 - **Assignment Zero:** Read the tutorial on how to use Blackboard if you have not used it before, and check if you can login and access this course.

“UT Arlington has adopted MavMail as its official means to communicate with students ... All students are assigned a MavMail account and are responsible for checking the inbox regularly...”

Paul Ammann and Jeff Offutt, Introduction to Software Testing, ISBN 978-0-521-88038-1, Cambridge University Press, 2008.



Reference

- Aditya P. Mathur, Foundations of Software Testing (2nd edition), ISBN 81-317-9476-8, Addison-Wesley Professional, 2014.
- David C. Kung, Object-Oriented Software Engineering, ISBN 978-0-07-337625-7, 2013.
- Martin Fowler, Refactoring: Improving the Design of Existing Code, ISBN 0201485672, Addison-Wesley, 1999.
- Penny Grubb and Armstrong A. Takang, Software Maintenance: Concepts and Practice (2nd Edition), ISBN 9812384251, 2003.

Homework

-
- Exam problems are similar to homework problems
 - Must be solved individually
 - Fine to discuss the assignments with others
 - **NEVER** share the solutions.
 - Account for 15% of your final grade

Grading

- The final grade will be calculated using the following percentages:
 - Homework : 15%
 - Presentation : 5%
 - Project: 10%
 - Midterm Exam: 30%
 - Final Exam: 40%
- If you have any questions about your grades, you **MUST** notify the TA or the instructor within **one** week after the grades become available.
 - The grades become **final** after one week!

Attendance

-
- Strongly recommended, and highly correlated with performance
 - The instructor reserves the right to change this policy

Late Assignments

- Late assignments are acceptable before solutions are posted or explained in class, with 10% deduction for every 24 hours. Less than 24 will be rounded to 24.
- If you have an emergency that prevents you from completing the work, contact the TA or the instructor prior to the due date.

NO Shortcut!

-
- Merit-based, NOT need-based
 - You get what you pay for (in terms of effort)!
 - Work hard from the very first day & on every assignment, presentation, and deliverable
 - No make-up assignment/exam will be given (unless emergence, with evidence of support)
 - High correlation between attendance and grades
 - Change the final grade after it is posted?
 - Historical records show no success!!

Academic Integrity

- You must **EARN** your credits honestly and professionally.
 - Merit-based, not need-based
- The reasons?
 - This is the only way for you to learn.
 - You don't want to lose your reputation to your fellow students.
 - You don't want to be a subject of disciplinary actions.
 - ...

Emergency Exit

- The nearest exit is located to the south side of this classroom
- The detailed evacuation map can be found at https://www.uta.edu/campus-ops/ehs/fire/Evac_Maps_All/Evac_NH/Evac_NH_202.pdf.

Question ?

Education is what remains after one has forgotten everything he learned in school.

- Albert Einstein